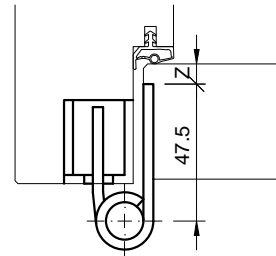
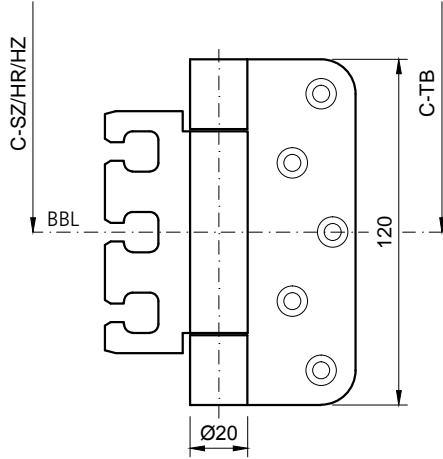
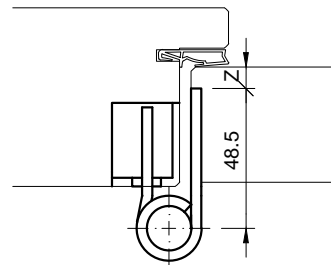
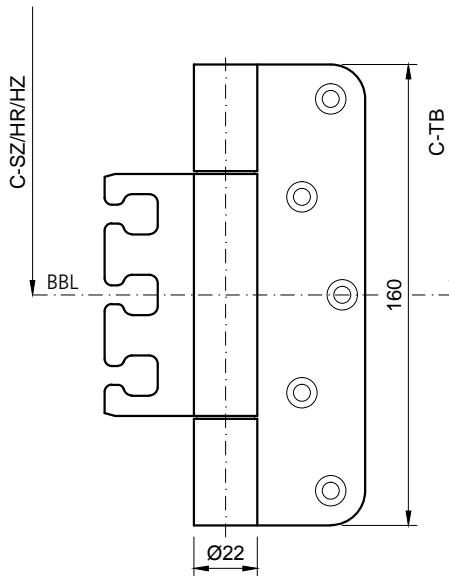


**VX7729/120 (SZ/HR/HZ)**  
Edelstahl matt



Blockfutter-Breite: min. 55mm

**VX7729/160 (SZ/HR/HZ)**  
Edelstahl matt



Blockfutter-Breite: min. 55mm

SZ = Stahlzargen, HR = Holzrahmen, HZ = Holzzargen