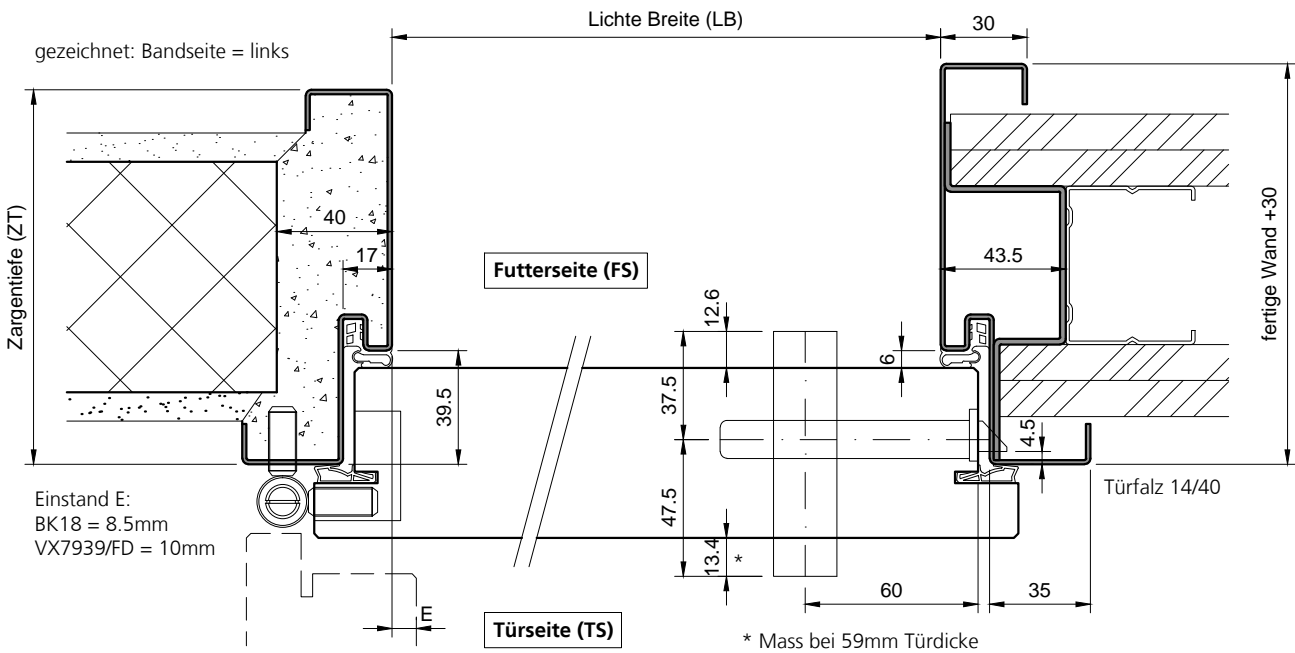
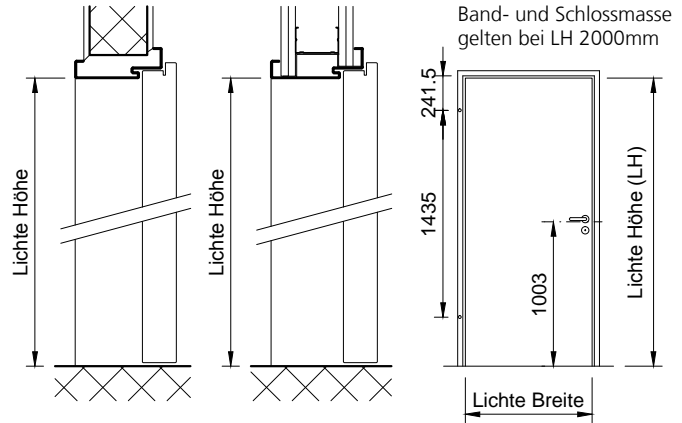
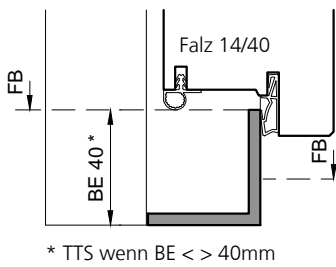


Stahl-Umfassungszarge Typ TTD39 auf MBW oder LBW, aus 1.5 mm elektrolytisch verzinktem Stahlblech, Ecken auf Gehrung. Mit schallhemmendem 58-61mm Türblatt.

Brandschutz-Tür TT-TOP/59(.A), Ausführungen:	
VKF Nr. 17423	1-flg., ohne/mit Alu, ohne Glas

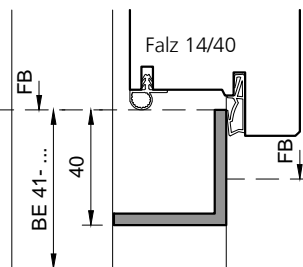


Typ: TT40S
(Schwellenwinkel)

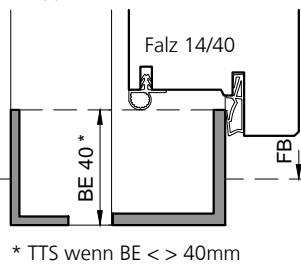


* TTS wenn BE <> 40mm

Typ: TT40S
(Schwellenwinkel)

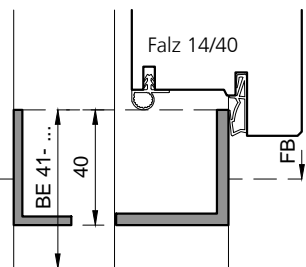


Typ: TT40S+S
(Doppelschwelle)

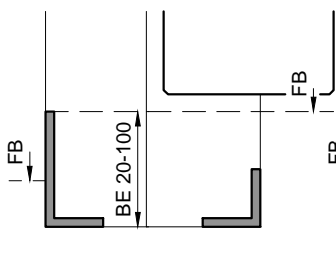


* TTS wenn BE <> 40mm

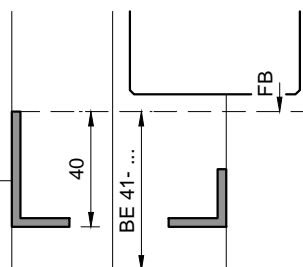
Typ: TT40S+S
(Doppelschwelle)



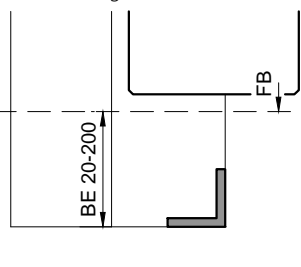
Typ: S (auf FS)
(Konterschwelle)



Typ: S (auf FS)
(Konterschwelle)



Typ: V
(Verbindungseisen)



Typ VP
(prov. Verbindungseisen)

